

ENTRANCE EXAMINATION

ASSUMPTION UNIVERSITY

SCHOOL OF MUSIC

ENTRANCE EXAM:

TERM:

EXAM DATE:

ALLOCATIONS:

Part I.....Notate intervals...10 Marks

Part IV...Time signatures...16 Marks

Part II.....Key Signatures.....24 Marks

Part V.....Triads.....16 Marks

Part III....Scales.....24 Marks

Part VI...Seventh chords....10 Marks

Total 100 Marks

Total 6 Parts

Question Paper 4 Pages

Name: _____

ENTRANCE EXAMINATION

[Part I: Notate intervals...10 Marks]

Notate the specified intervals *above and below* the given pitches. Please be aware that bass and treble clefs are used. Use the example below as a guide.

Example: Question



Perfect 4th

Answer



Perfect 4th



minor 6th

Major 7th

Perfect 4th

minor 7th

minor 3rd



Major 6th

Major 3rd

Augmented 4th

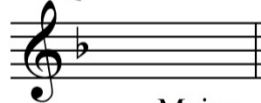
Perfect 5th

Major 2nd

[Part II: Key signatures...24 Marks]

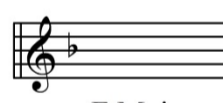
Notate the specified key signatures and indicate the relative key. Use the example below as a guide.

Example: Question



___ Major
___ minor

Answer



F Major
d minor



___ Major
___ minor

___ Major
___ minor

___ Major
___ minor

___ Major
___ minor

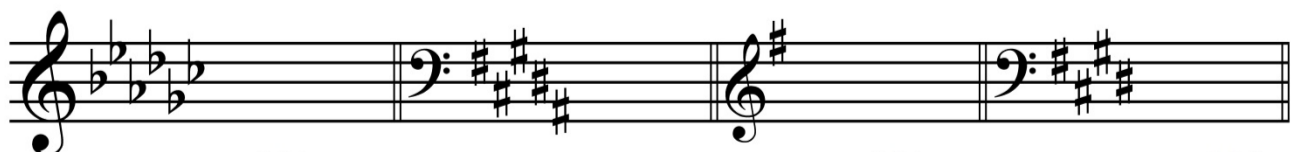


___ Major
___ minor

___ Major
___ minor

___ Major
___ minor

___ Major
___ minor



___ Major
___ minor

___ Major
___ minor

___ Major
___ minor

___ Major
___ minor

ENTRANCE EXAMINATION

[Part III: Major and minor scales...24 Marks]

Complete the following scales by adding accidentals—not key signatures. Use the example below as a guide.

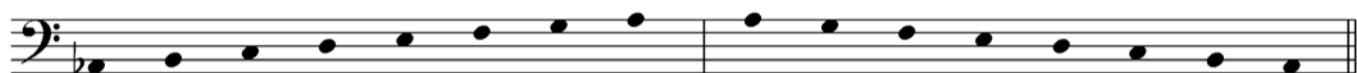
Question:



Answer:



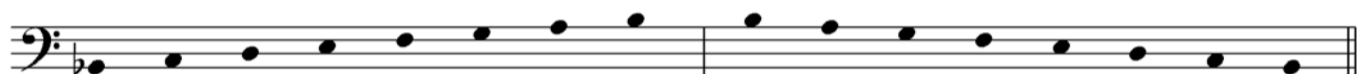
d melodic minor



Ab Major



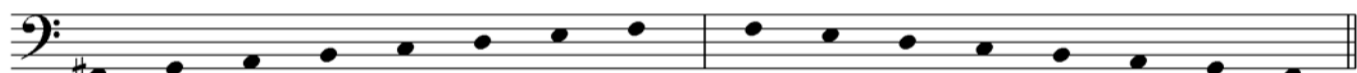
eb harmonic minor



bb natural minor



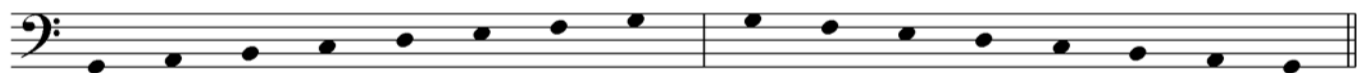
c# natural minor



f# harmonic minor



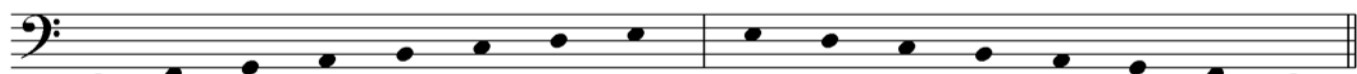
A Major



g melodic minor



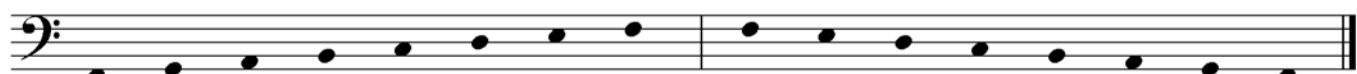
Eb Major



e harmonic minor



b natural minor



f melodic minor

ENTRANCE EXAMINATION

[Part IV: Time signatures...16 Marks]

Provide an appropriate time signature for each measure below. In some cases, more than one answer may be possible. Use the example below as a guide.

Question:



Answer:



[Part V: Triad qualities...16 Marks]

Complete the following triads by adding accidentals. Use the example below as a guide.

Question:

C minor



Answer:



C minor



ENTRANCE EXAMINATION


[Part VI: 7th Chord Qualities...10 Marks]

Complete the following 7th chords by adding accidentals. Use the example below as a guide.

<i>Question:</i>	<i>Answer:</i>
C7	C7
	

(Fm^{7(b5)})

F^{#m}7 F^ø7 Bb7 Dmaj7 G^ø7



Workspace
